

The Settler Range

of Australian made quality woodheaters



Settler 500

Spend more time enjoying and less time cleaning with the Settler 500. It heats and burns cleanly like a space heater yet it has all the character and warmth of a traditional log fire. With a large self cleaning viewing window, cast iron liners and 3 speed fan, it can heat up to 20 squares of open living area. Colour: charcoal

Overall Dimensions

Height 735mm, Width 650mm, Depth 525mm.

Minimum Clearance to Combustible Materials

Standard installation - 150mm from rear wall
 300mm to nearest side wall
 Corner installation - 75mm to nearest wall
 Hearth - 400mm to front

Settler 600

The Settler 600 makes woodheating easy. It heats and burns cleanly like a space heater yet it has all the character and warmth of a traditional log fire. With a large self cleaning viewing window, cast iron liners and 3 speed fan, it can heat up to 30 squares of open living area. Colour: charcoal

Overall Dimensions

Height 795mm, Width 780mm, Depth 560mm.

Minimum Clearance to Combustible Materials

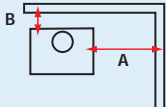
Standard installation - 125mm from rear wall
 300mm to nearest side wall
 Corner installation - 100mm to nearest wall
 Hearth - 500mm to front

Clearance to Combustible Materials – Freestanding Model

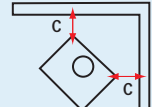
Model	A	B	C	D	E
	mm	mm	mm	mm	mm
Settler 600	300	125	100	500	100
Settler 500	300	150	75	400	100



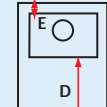
Standard Installation



Corner Installation



Hearth Distance



Heating Areas

Important: Heating areas provided are based on open plan living areas and 2.4 metre ceiling height. Note: Lack of insulation, large window areas and cathedral ceilings reduce heating efficiency.

Warranty

There is a 10 year warranty on the firebox and a 12 month warranty on all other components. Glass excluded.

The Settler Range

of Australian made quality woodheaters

Settler Slimline Inbuilts

Slimline 500

The Settler Slimline 500 is a stylish heater that heats up to 20 squares and will enhance any fireplace. With a large self-cleaning viewing window, cast iron liners and 3 speed fan, it will provide optimum warmth.

Dimensions

Firebox: Height 595mm, Width 565mm, Depth 430mm
 Overall: Height 735mm, Width 980, Depth 530mm
 Hearth: 400mm to front
 Colour: charcoal



Slimline 600

The Settler Slimline 600 is a finely crafted woodheater that will heat up to 28 squares and will add elegance to your fireplace. With a large self-cleaning viewing window, cast iron liners and 3 speed fan, it will provide optimum warmth.

Dimensions

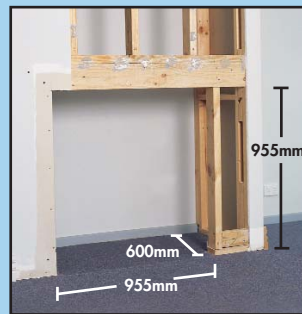
Firebox: Height 595mm, Width 695mm, Depth 465mm
 Overall: Height 735mm, Width 1100, Depth 580mm
 Hearth: 400mm to front
 Colour: charcoal

No Fireplace Necessary!

With Settler Zero Clearance Z Box, you can install a Settler woodheater without the need of a conventional brick fireplace and chimney.

The Z Box allows you to install inbuilt woodheater directly onto a floor using the floor plate/hearth which can be supplied with your Z Box heater.

Detailed installation instructions, with clearances to combustible materials, are available from your Settler dealer.



Timber framework, partially plaster board clad



Zero Clearance Box positioned in framework on 12mm sheet

Environmental & Efficiency Standards

Settler heaters comply with Australian Standards AS/NZ4012:1999 & AS/NZ4013:1999, Power, Performance and Emissions.

Based on our current state of knowledge, all of the information contained in this brochure was correct at the time of printing, June 2007. However, the manufacturer reserves the right to make changes to design and specification without notice. You can confirm current designs, specifications, optional extras and financial details by consulting your nearest authorised Settler dealer.

Your Settler dealer is:



A.B.N. 61 007 251 569
 14-18 Research Dve, Croydon Sth. 3136
 Tel: (03) 9737 5300 Fax: (03) 9761 6455
www.shamic.com.au



a sponsor of

